



Courses for Cruisers 0, 1, 2, Beneteau 31.7, Cruisers 3, Cruisers 4A / 4B / 5A / 5B

Race Committee Vessel Identification: Red flag. Channel 74

1. The Course

A course letter, [A-R], and number [1, 2, 3, 4, 5,6,7 or 8] will be displayed on the Race Committee Vessel from approximately (3) three minutes before the start of each class to approximately (1) one minute after the start of each class and may be announced on the radio. The letter and number shall designate the course to be sailed for that class as defined in the following list of courses on **COURSE CARDA** This changes RRS 27.1.

2. Marks

- 2.1 Marks of the course will be navigation buoys and racing marks positioned in Dublin Bay the approximate position as shown on the chart attached with these sailing Instructions.
- 2.2 Starting and finishing line outer limit marks may be candy striped inflatable marks or a pin type with a flag. Inner distance marks, if laid, may be of the 'Dan Buoy' type.

3. Starting & Finishing Lines

- 3.1 The race start will be approximately North to North East of Dun Laoghaire Harbour.
- 3.2 The Race Committee finishing boat shall be approximately positioned to weather of the last mark of the course (unless shortened) The finishing line shall be between the main mast of a Race Committee Boat displaying a Blue Flag and the course identification Red Flag and the finishing mark.

The following will be the classes to race, their class flag, the schedule of races and the start will be as per RRS 26

Warning Signal	11.55	
Class	Class Flag	Start Signal
		Start times changed see Amendment 2
Cruiser 0	No. 0	1200
Cruiser 1	No. 1	1205 12:00
Cruiser 2	No. 2	1210 12:05
Beneteau 31.7	No. 9	1215 12:05
Cruisers 3	No. 3	1220 12:10
Cruisers 4A / 4B / 5A / 5B	No. 4 / No. 5	1225 12:15

DUN LAOGHAIRE COMBINED CLUBS

Schedule A



2024

A NORTH 000

1 E D B D B D C K
2 E D B D C K
3 E C K
4 E K

B NNE 022.5

1 F E B E B E C K
2 F E B E C K
3 F C K
4 F K

C E 045

1 F E C E C E D B
2 F E C E D B
3 F D B
4 F B

D ENE 066.5

1 G F C F C F D B
2 G F C F D B
3 G D B
4 G B

E EAST 090

1 G F D F D F E C
2 G F D F E C
3 G E C
4 G C

F ESE 112.5

1 J G D G D G E C
2 J G D G E C
3 J E C
4 J C

G SE 135

1 J G E G E G F D
2 J G E G F D
3 J F D
4 J D

H SSE 157.5

1 K J E J E J F D
2 K J E J F D
3 K F D
4 K D

J SOUTH 180

1 K J F J F J G E
2 K J F J G E
3 K G E
4 K E

K SSW 202.5

1 B K F K F K G E
2 B K F K G E
3 B G E
4 B E

L SW 225

1 B K G K G K G F
2 B K G K J F
3 B J F
4 B F

M WSW 247.5

1 C B G B G B J F
2 C B G B J F
3 C J F
4 C F

N WEST 270

1 C B J B J B K G
2 C B J B K G
3 C K G
4 C G

P WNW 292.5

1 D C J C J C K G
2 D C J C K G
3 D K G
4 D G

Q NW 315

1 D C K C K C B J
2 D C K C B J
3 D B J
4 D J

R NNW 337.5

1 E D K D K D B J
2 E D K D B J
3 E B J
4 E J

The object of this Course Card is to run two races back-to-back and the courses will be signaled as follows. Course letter followed by number, followed by "X" or "+" and another letter and number

- "X" signifies number of rounds
- "+" signifies the next round/course to be sailed under same course letter or a different course letter.

For example:

A1 X 2 = 2 rounds of course A1

A1 + A2 = 1 round of course A1 and 1 round of course A2

Or,

A1 + B1 = 1 round course A1 and 1 round course B1

Note

If the International Code Flag "F" is flown at a mark, proceed directly to the finish.

PLEASE RETAIN THIS CARD FOR DMYC, NYC, RIYC & RSGYC REGATTAS

**ALL MARKS ARE TO BE ROUNDED TO PORT
THE FINISH, UNLESS SHORTENED, SHALL BE TO WINDWARD OF THE LAST MARK OF THE COURSE**

Yacht Racing Marks Distance & Bearings



W06.0* α	From	West Pier (O)	Salthill (A)	Saioirse (B)	S'Point (C)	S'Bar (D)	S'Bull (E)	Bligh (F)	N'Ross (G)	Harb'r (H)	Asgard (J)	Boyd (K)	Merrion (L)	Middle (M)	Molly (N)	Poldy (P)	Island (Q)	Bullloch (R)	East (S) (T)	Battery (V)	Pier (W)	Bay (X)	Omega (Y)	Zebra (Z)	Turning (X)	
7.92	O West Pier	275	051	066	1.15	1.65	1.91	1.93	1.66	0.50	1.21	0.67	0.85	1.26	1.12	1.73	1.78	1.61	1.49	1.26	0.82	0.89	1.28	1.24	0.14	
9.00	A Salthill	095	...	043	017	020	032	044	058	064	068	069	353	043	098	109	128	101	128	107	128	107	124	115	083	085
8.15	B Saioirse	185	224	...	335	000	024	045	068	146	090	115	266	042	129	131	141	151	2.00	1.66	1.32	1.30	1.76	1.74	0.40	
8.60	C S'Point	172	197	155	...	024	048	067	090	148	112	136	218	089	136	136	144	152	132	156	148	158	146	122	177	
8.30	D Sth.Bull	182	200	180	204	...	072	091	114	165	136	160	212	138	150	147	153	160	145	164	161	168	156	140	186	
7.45	E Sth.Bar	198	212	205	228	252	...	113	137	186	160	183	224	187	166	158	163	171	158	176	176	181	169	158	202	
6.70	F Bligh	212	224	225	248	271	293	...	159	204	180	203	238	227	177	166	171	179	3.04	2.32	2.80	2.15	2.50	2.55	1.67	
6.30	G N'Ross	227	238	248	270	294	317	339	...	222	203	226	254	271	185	169	174	183	171	191	197	200	184	180	232	
7.77	H Harbour	204	242	323	326	346	007	025	043	...	062	068	284	010	115	122	133	146	113	152	139	158	137	091	222	
6.56	J Asgard	237	248	270	292	316	340	000	023	241	...	247	268	314	174	157	166	178	1.85	1.09	1.65	1.03	1.42	1.35	0.44	
7.37	K Boyd	229	249	295	316	340	003	023	046	244	067	...	279	000	137	137	148	161	130	169	162	177	153	104	239	
9.20	L Merrion	137	173	086	038	032	044	058	074	102	088	099	...	064	115	121	130	137	115	139	126	139	128	101	139	
7.48	M Middle	204	223	222	269	318	007	047	091	190	134	180	244	...	156	150	157	166	2.24	2.10	1.63	1.73	2.11	1.83	0.71	
6.28	N Molly	279	278	309	316	330	346	357	005	296	354	317	295	336	...	137	159	181	114	202	247	227	182	014	282	
5.40	P Poldy	294	289	311	316	327	338	346	349	301	337	317	301	330	317	...	202	225	339	250	293	270	271	339	295	
5.58	Q Island	306	299	321	324	333	343	351	354	315	346	328	310	337	339	022	...	249	001	276	316	292	316	350	306	
6.16	R Bullloch	318	308	331	332	340	351	359	003	327	358	341	317	346	001	045	069	...	023	305	339	314	001	005	317	
5.68	S East	283	281	306	312	325	338	348	351	295	336	310	295	328	294	159	181	203	...	226	270	248	226	339	285	
6.68	T Battery	321	308	336	336	344	356	005	011	332	008	349	319	352	022	070	096	125	046	...	357	322	045	019	320	
6.84	V Pier	294	287	325	328	341	356	008	017	319	015	342	306	351	067	113	136	159	090	177	...	208	137	038	296	
7.10	W Bay	321	304	339	338	348	001	011	020	339	018	357	319	358	047	090	112	134	068	142	028	...	090	034	319	
6.23	Y Omega	302	295	323	326	336	349	358	004	315	357	333	308	342	002	091	136	181	046	225	317	270	...	008	303	
6.16	Z Zebra	258	263	289	302	320	338	352	000	269	333	284	281	321	194	159	170	185	159	199	218	214	188	...	262	
8.34	X Turning	126	265	016	357	006	022	036	052	047	063	059	319	030	102	114	126	137	105	140	116	139	123	082	...	

2 - Black start mark N 53° 18.412' W 006 08.066'

3 - Green start mark N 53° 18.401' W 006° 08.226'

53°

21'

NO GO

53°

20'

53°

19'

53°

18'

NOT TO SCALE
NOT TO BE USED FOR NAVIGATION

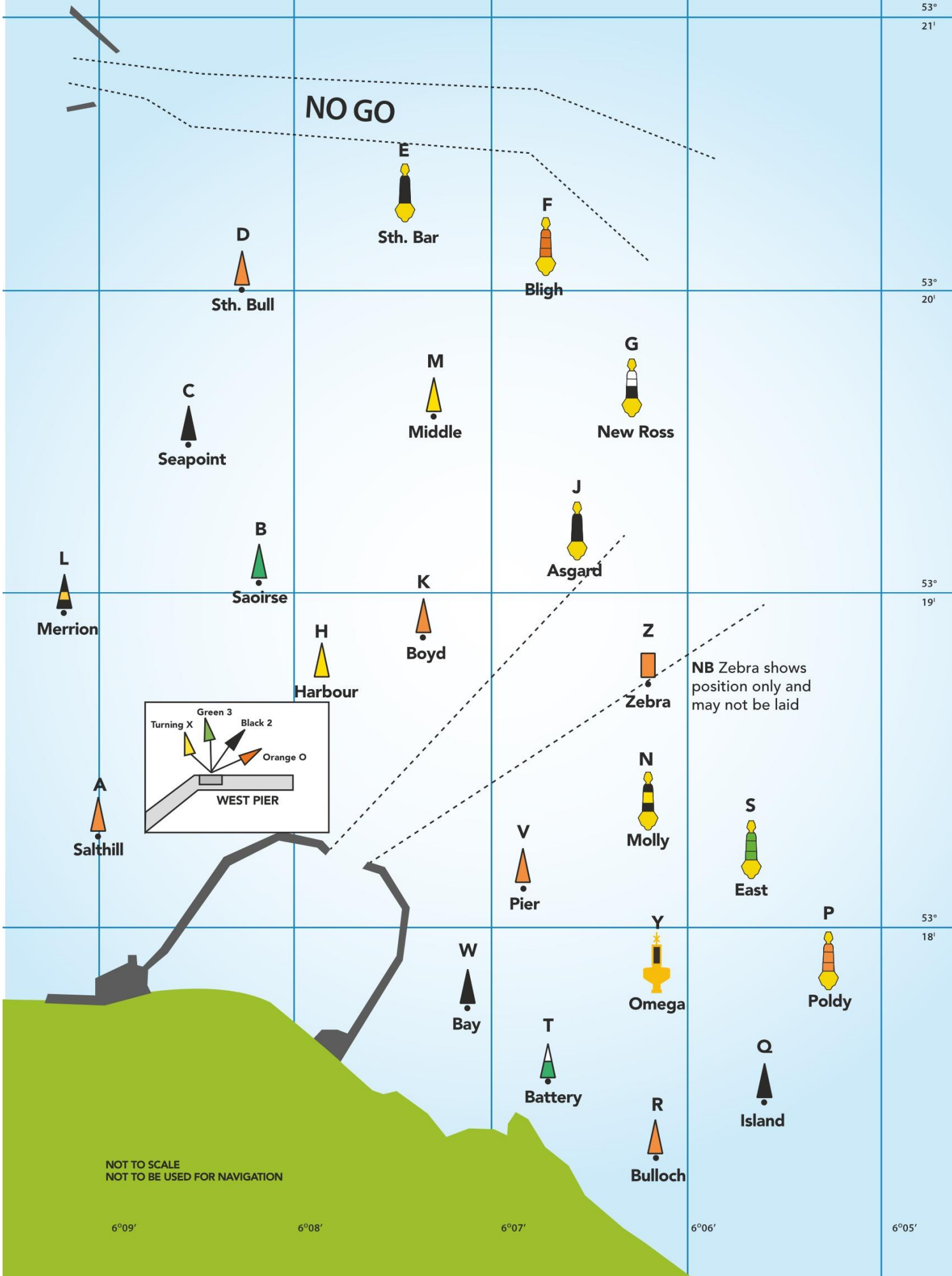
6°09'

6°08'

6°07'

6°06'

6°05'



L
Merrion

C
Seapoint

D
Sth. Bull

E
Sth. Bar

F
Bligh

M
Middle

G
New Ross

J
Asgard

B
Saoirse

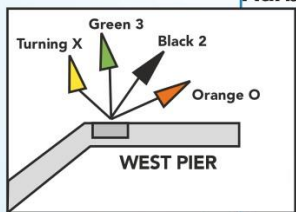
K
Boyd

H
Harbour

Z
Zebra

NB Zebra shows position only and may not be laid

A
Salthill



V
Pier

N
Molly

S
East

W
Bay

Y
Omega

P
Poldy

T
Battery

Q
Island

R
Bulloch